

HORARIOS CIRCUITO ESCOLAR

08:00 h APERTURA SECRETARIA TRANSICIÓN

09:00 h SALIDA JUVENIL masculina

09:02 h SALIDA JUVENIL femenina

10:00 h SALIDA CADETE masculina – (Cto de Madrid)

10:02 h SALIDA CADETE femenina – (Cto de Madrid)

11:00 h SALIDA INFANTIL masculina

11:50 h SALIDA INFANTIL femenina

12:40 h SALIDA ALEVÍN masculina

13:15 h SALIDA ALEVÍN femenina

13:50 h ENTREGA DE MEDALLAS (JUVENIL, CADETE, INFANTIL Y ALEVÍN)

14:05 h SALIDAS BENJAMÍN (X3)

14:40 h SALIDAS PRE-BENJAMÍN (X3)



JUVENIL / CADETE

- 2,5 Km 1ª CARRERA A PIE
- 9,8 km CICLISMO (2 vueltas x 4.9k)

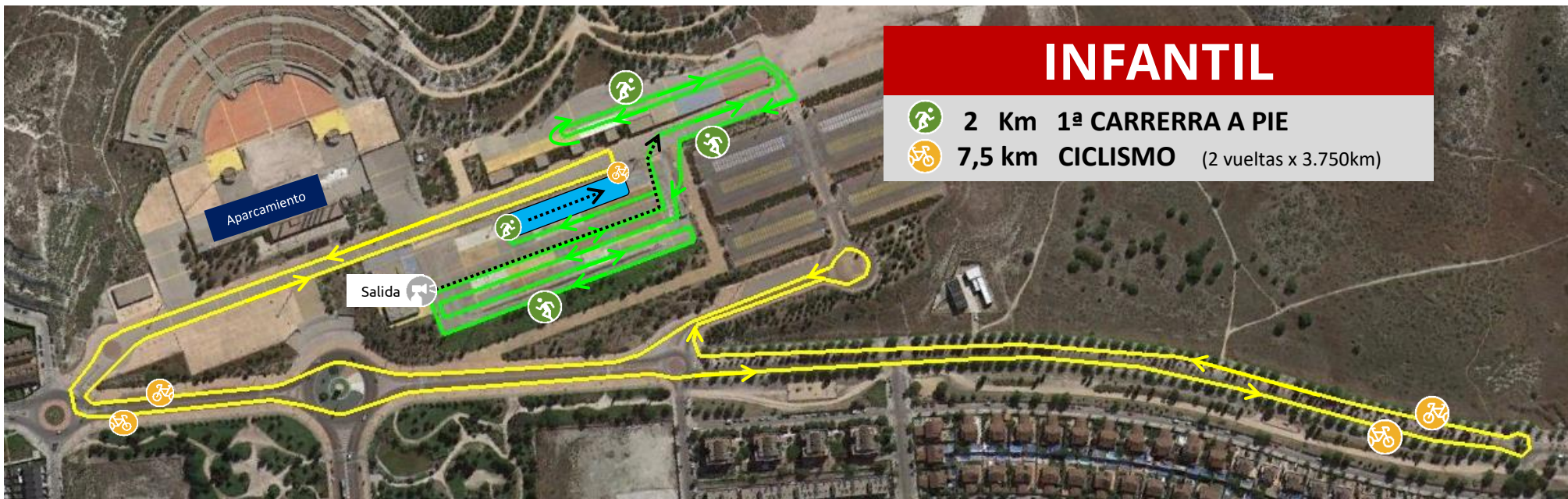


1.255m 2ª CARRERA A PIE

Transición

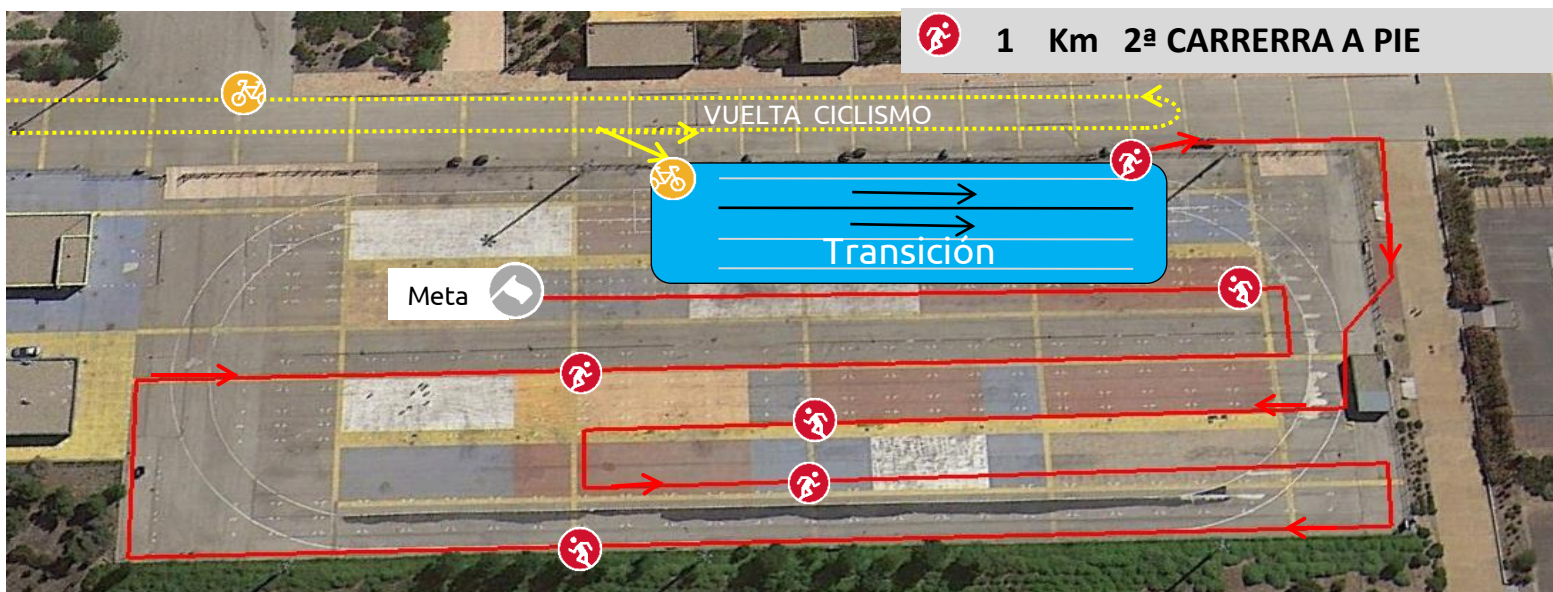
VUELTA CICLISMO

Meta



INFANTIL

- 2 Km 1ª CARRERA A PIE
- 7,5 km CICLISMO (2 vueltas x 3.750km)



1 Km 2ª CARRERA A PIE

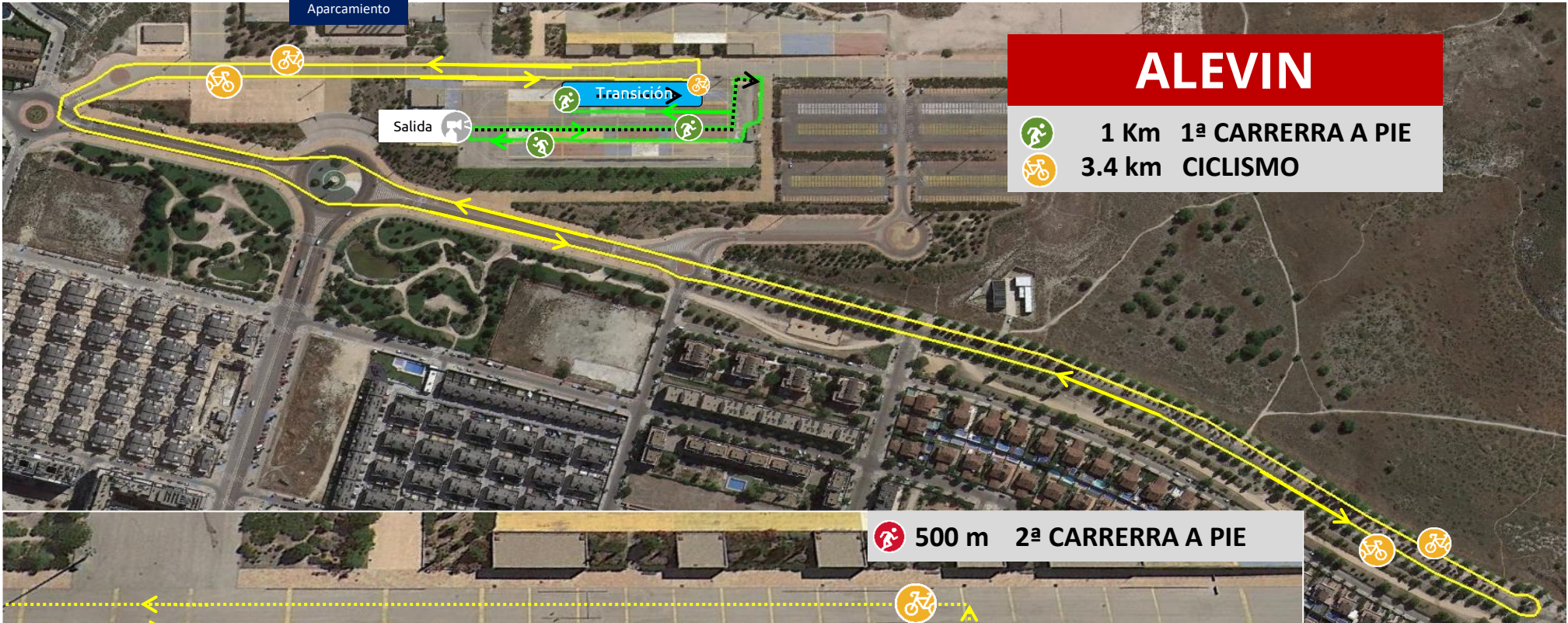
VUELTA CICLISMO

Transición

Meta

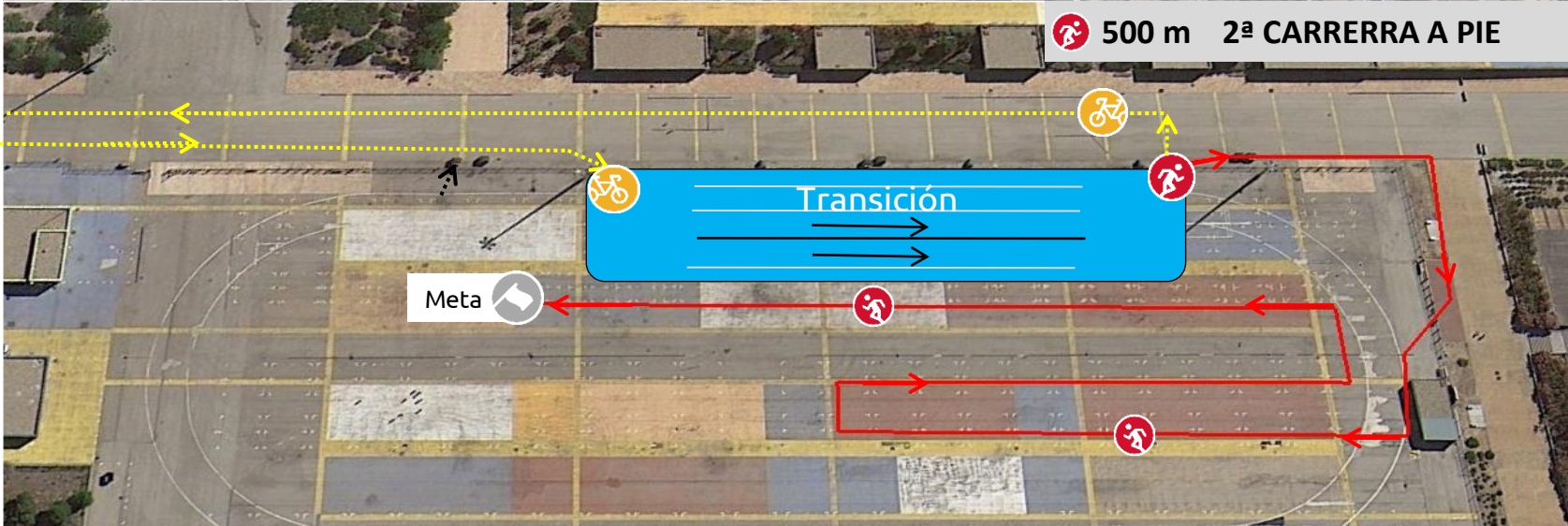


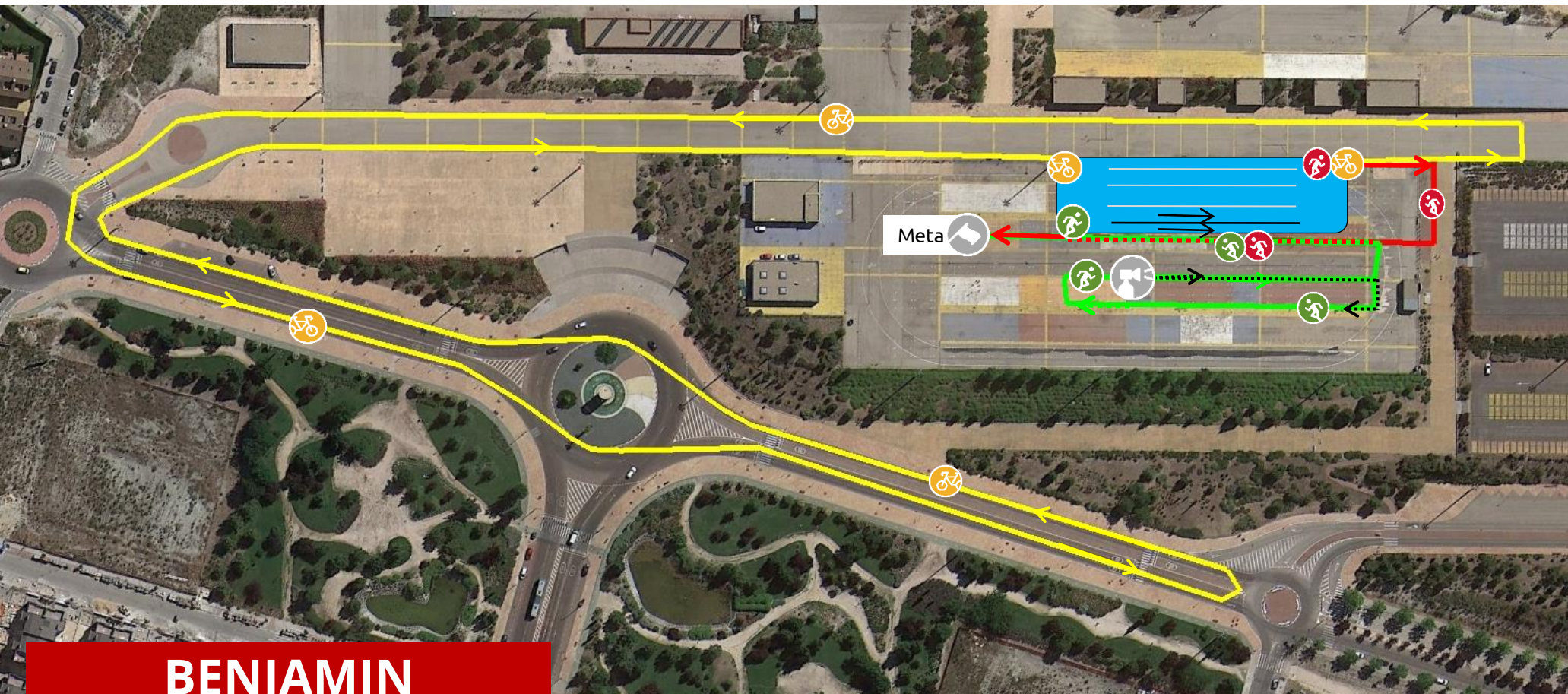
Aparcamiento






ALEVIN

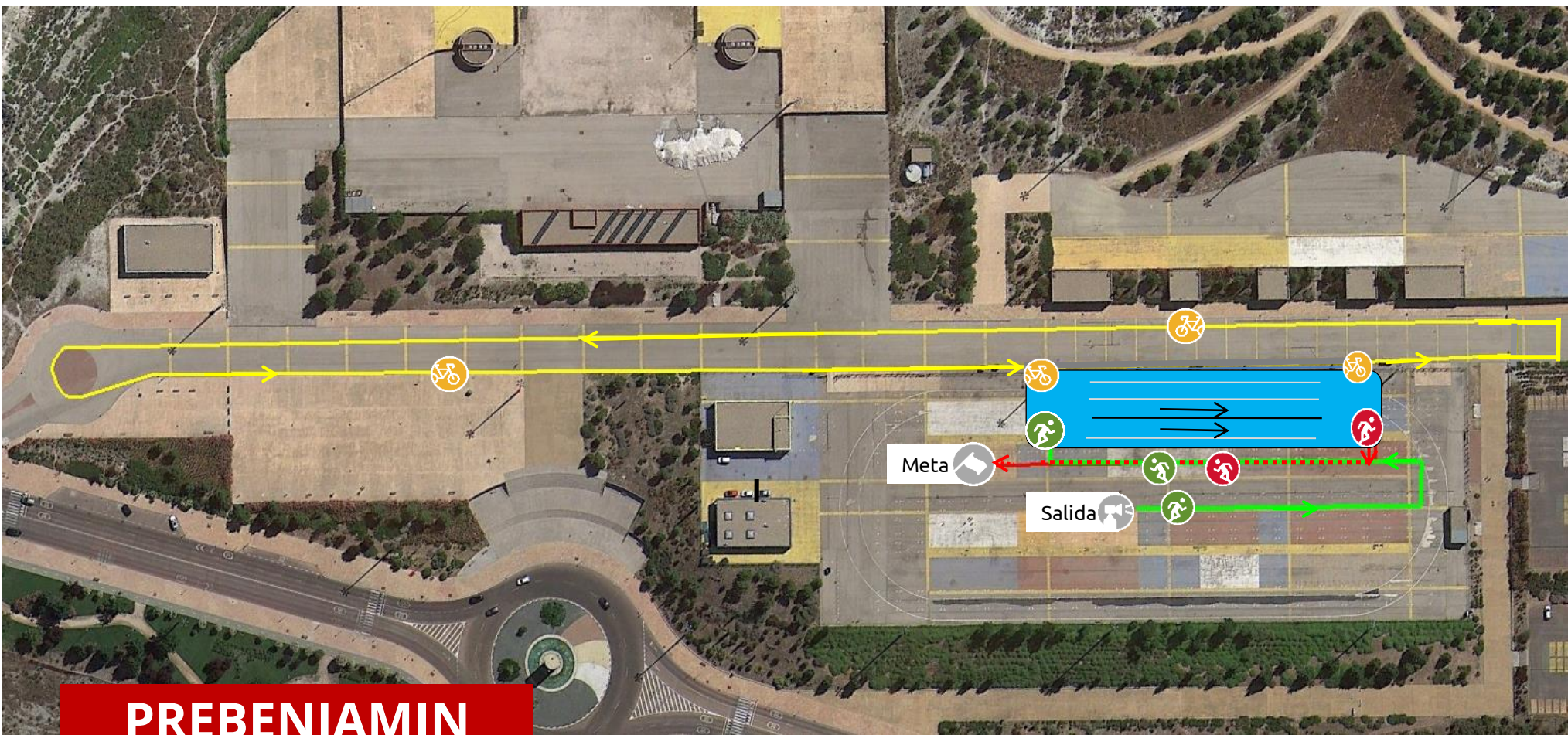
- 1 Km 1ª CARRERA A PIE
- 3.4 km CICLISMO








BENJAMIN

-  500 m 1ª CARRERA A PIE
-  2 km CICLISMO
-  250 m 2ª CARRERA A PIE



PREBENJAMIN

-  250 m 1ª CARRERA A PIE
-  1000 m CICLISMO
-  140 m 2ª CARRERA A PIE

TRANSICIONES



TRANSICIÓN SÁBADO

